

MARKET COMPARISON CHARTS



Alamo Title

512.483.6710

WWW.ALAMOTITLE-AUSTIN.COM

2005-2009

AVERAGE SALES PRICE

WWW.ALAMOTITLE-AUSTIN.COM · 512.483.6710



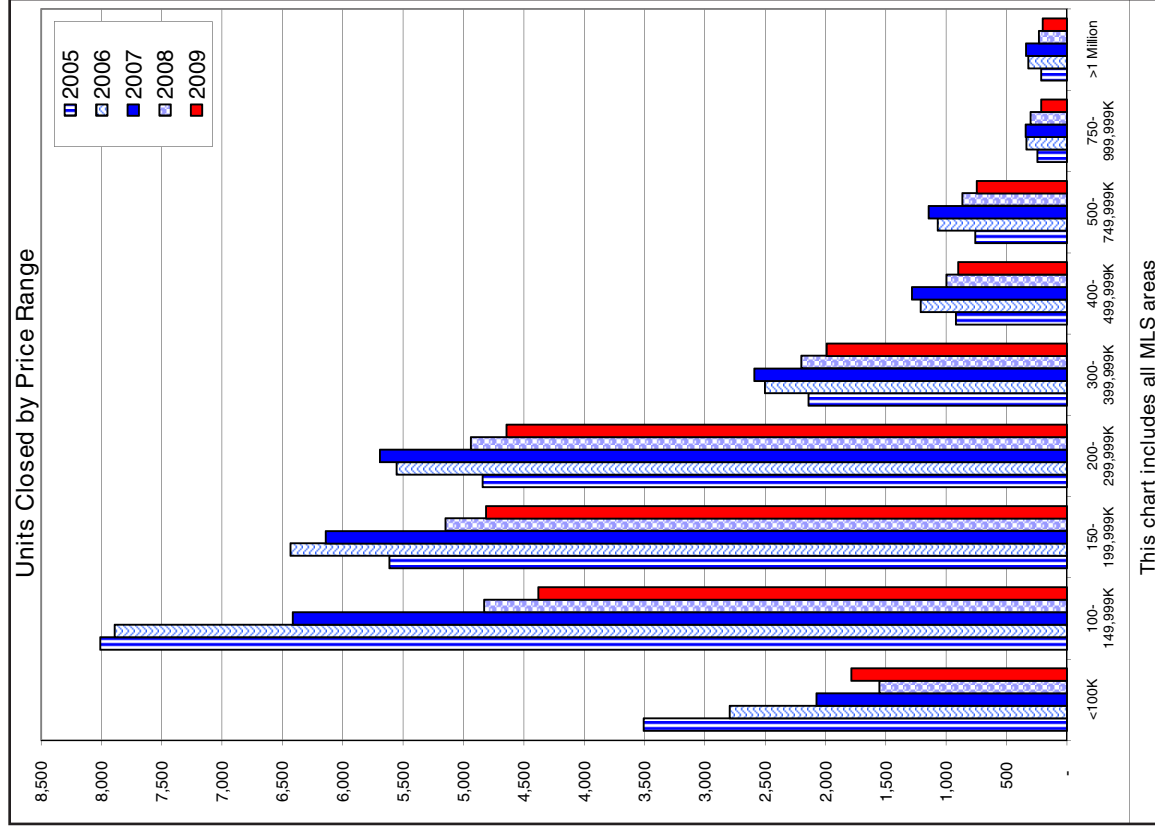
Alamo Title

MLS Area	2005	2006	2007	2008	2009	2005/2006	2006/2007	2007/2008	2008/2009	2005/2009	
										5 Yr Change	
10N	129,188	149,782	180,108	187,741	182,101	15.94%	20.25%	4.24%	-3.00%	70.94%	
10S	141,859	156,692	174,326	177,790	178,081	10.46%	11.25%	1.99%	0.16%	79.66%	
11	95,407	100,657	114,605	112,367	107,899	5.50%	13.86%	-1.95%	-3.98%	88.42%	
1A	285,956	327,950	350,054	348,018	339,508	14.69%	6.74%	-0.58%	-2.45%	84.23%	
1B	396,594	454,084	582,630	591,178	581,169	14.50%	28.31%	1.47%	-1.69%	68.24%	
1N	254,610	278,042	287,345	285,726	289,178	9.20%	3.35%	-0.56%	1.21%	88.05%	
2	184,845	206,132	233,051	238,297	227,597	11.52%	13.06%	2.25%	-4.49%	81.22%	
2N	119,638	136,031	147,731	133,133	127,734	13.70%	8.60%	-9.88%	-4.06%	93.66%	
3	151,963	169,972	192,645	219,974	219,401	11.85%	13.34%	14.19%	-0.26%	69.26%	
3E	86,000	103,784	121,848	152,866	131,884	20.68%	17.40%	25.46%	-13.73%	65.21%	
4	251,849	289,485	314,723	332,609	319,979	14.94%	8.72%	5.68%	-3.80%	78.71%	
5	119,804	155,836	180,648	190,076	175,657	30.08%	15.92%	5.22%	-7.59%	68.20%	
5E	96,350	111,540	105,966	109,767	106,920	15.76%	-5.00%	3.59%	-2.59%	90.11%	
6	225,457	291,612	310,702	305,161	293,334	29.34%	6.55%	-1.78%	-3.88%	76.86%	
7	294,809	299,746	356,906	385,345	373,162	1.67%	19.07%	7.97%	-3.16%	79.00%	
8E	654,157	746,554	812,885	773,901	791,599	14.12%	8.88%	-4.80%	2.29%	82.64%	
8W	498,081	669,820	667,903	606,346	618,863	34.48%	-0.29%	-9.22%	2.06%	80.48%	
9	121,145	117,351	138,007	127,693	107,013	-3.13%	17.60%	-7.47%	-16.20%	113.21%	
BA	122,688	142,053	146,216	147,229	143,205	15.78%	2.93%	0.69%	-2.73%	85.67%	
BL	200,654	197,332	255,383	219,197	228,846	-1.66%	29.42%	-14.17%	4.40%	87.68%	
BT	* No Data Available			54,675	90,800	* No Data Available			66.07%	* No Data Available	
BU	185,626	225,310	233,621	221,130	185,048	21.38%	3.69%	-5.35%	-16.32%	100.31%	
BW	142,227	150,944	137,692	177,963	161,145	6.13%	-8.78%	29.25%	-9.45%	88.26%	
CC	109,268	120,906	118,175	118,200	103,237	10.65%	-2.26%	0.02%	-12.66%	105.84%	
CLN	143,765	161,326	167,820	177,057	179,522	12.21%	4.03%	5.50%	1.39%	80.08%	
CLS	205,441	210,951	233,089	234,918	230,795	2.68%	10.49%	0.78%	-1.75%	89.01%	
CM	342,760	157,500	311,099	253,018	236,235	-54.05%	97.52%	-18.67%	-6.63%	145.09%	
DT	551,983	655,430	403,079	350,337	370,325	18.74%	-38.50%	-13.08%	5.71%	149.05%	
EL	124,207	129,146	133,802	120,760	113,824	3.98%	3.61%	-9.75%	-5.74%	109.12%	
FC	87,825	165,807	187,128	153,774	129,213	88.79%	12.86%	-17.82%	-15.97%	67.97%	
GP	260,500	198,000	595,000	1,087,500	175,000	-23.99%	200.51%	82.77%	-83.91%	148.86%	
GTE	143,562	142,747	155,473	162,008	156,279	-0.57%	8.92%	4.20%	-3.54%	91.86%	
GTW	231,577	246,610	251,475	246,994	248,155	6.49%	1.97%	-1.78%	0.47%	93.32%	
GZ	* No Data Available			146,275	98,000	* No Data Available			-33.00%	148.88%	* No Data Available
HD	307,707	346,109	392,151	358,028	324,793	12.48%	13.30%	-8.70%	-9.28%	94.74%	
HH	152,711	162,603	165,876	175,956	162,595	6.48%	2.01%	6.08%	-7.58%	93.92%	
HS	144,884	164,892	172,403	165,755	157,824	13.81%	4.55%	-3.86%	-4.78%	91.80%	
HU	139,952	147,656	144,237	148,021	148,517	5.50%	-2.32%	2.62%	0.33%	94.23%	
HW	219,198	246,927	277,174	236,256	226,612	12.65%	12.25%	-14.76%	-4.08%	96.73%	
JA	134,088	169,378	139,728	130,837	110,920	26.32%	-17.51%	-6.36%	-15.22%	120.89%	
KL	* No Data Available			212,458	82,188	* No Data Available			-61.32%	* No Data Available	
LC	131,987	155,681	154,095	128,217	138,937	17.95%	-1.02%	-16.79%	8.36%	95.00%	
LH	199,682	218,354	234,561	229,061	227,218	9.35%	7.42%	-2.34%	-0.80%	87.88%	
LL	234,806	261,523	199,705	242,202	305,631	11.38%	-23.64%	21.28%	26.19%	76.83%	
LN	219,540	257,727	260,780	241,520	232,663	17.39%	1.18%	-7.39%	-3.67%	94.36%	
LS	394,999	436,895	455,994	456,701	423,835	10.61%	4.37%	0.15%	-7.20%	93.20%	
LW	472,214	562,518	491,673	447,636	368,911	19.12%	-12.59%	-8.96%	-17.59%	128.00%	
MA	144,555	153,359	148,175	141,193	120,567	6.09%	-3.38%	-4.71%	-14.61%	119.90%	
MC	78,900	100,252	114,539	100,346	100,782	27.06%	14.25%	-12.39%	0.43%	78.29%	
N	168,905	179,644	187,421	188,154	184,797	6.36%	4.33%	0.39%	-1.78%	91.40%	
NE	132,402	138,012	145,474	149,730	145,572	4.24%	5.41%	2.93%	-2.78%	90.95%	
NW	217,178	222,334	237,172	237,849	228,477	2.37%	6.67%	0.29%	-3.94%	95.05%	
OT	152,130	206,826	200,722	179,456	174,135	35.95%	-2.95%	-10.59%	-2.97%	87.36%	
PF	145,615	158,744	163,608	164,602	162,008	9.02%	3.06%	0.61%	-1.58%	89.88%	
RN	454,642	505,033	513,167	499,008	456,392	11.08%	1.61%	-2.76%	-8.54%	99.62%	
RRE	177,099	186,992	183,535	185,336	186,989	5.59%	-1.85%	0.98%	0.89%	94.71%	
RRW	207,035	217,901	238,499	243,296	227,773	5.25%	9.45%	2.01%	-6.38%	90.90%	
SC	173,526	189,677	193,170	179,226	173,279	9.31%	1.84%	-7.22%	-3.32%	100.14%	
SE	102,637	114,218	119,924	123,577	109,290	11.28%	4.99%	3.05%	-11.56%	93.91%	
SV	122,987	127,462	135,647	128,795	114,511	3.64%	6.42%	-5.05%	-11.09%	107.40%	
SWE	193,249	218,924	229,174	233,613	227,023	13.29%	4.68%	1.94%	-2.82%	85.12%	
SWW	239,772	272,069	294,021	298,053	286,375	13.47%	8.07%	1.37%	-3.92%	83.73%	
TC	99,842	107,786	110,583	122,448	100,827	7.96%	2.59%	10.73%	-17.66%	99.02%	
UT	359,380	416,530	230,276	266,910	226,455	15.90%	-44.72%	15.91%	-15.16%	158.70%	
W	424,330	492,831	524,870	435,427	449,353	16.14%	6.50%	-17.04%	3.20%	94.43%	
WE	96,602	125,182	100,813	140,318	161,788	29.58%	-19.47%	39.19%	15.30%	59.71%	
WW	134,039	159,779	141,371	134,380	168,920	19.20%	-11.52%	-4.94%	25.70%	79.35%	

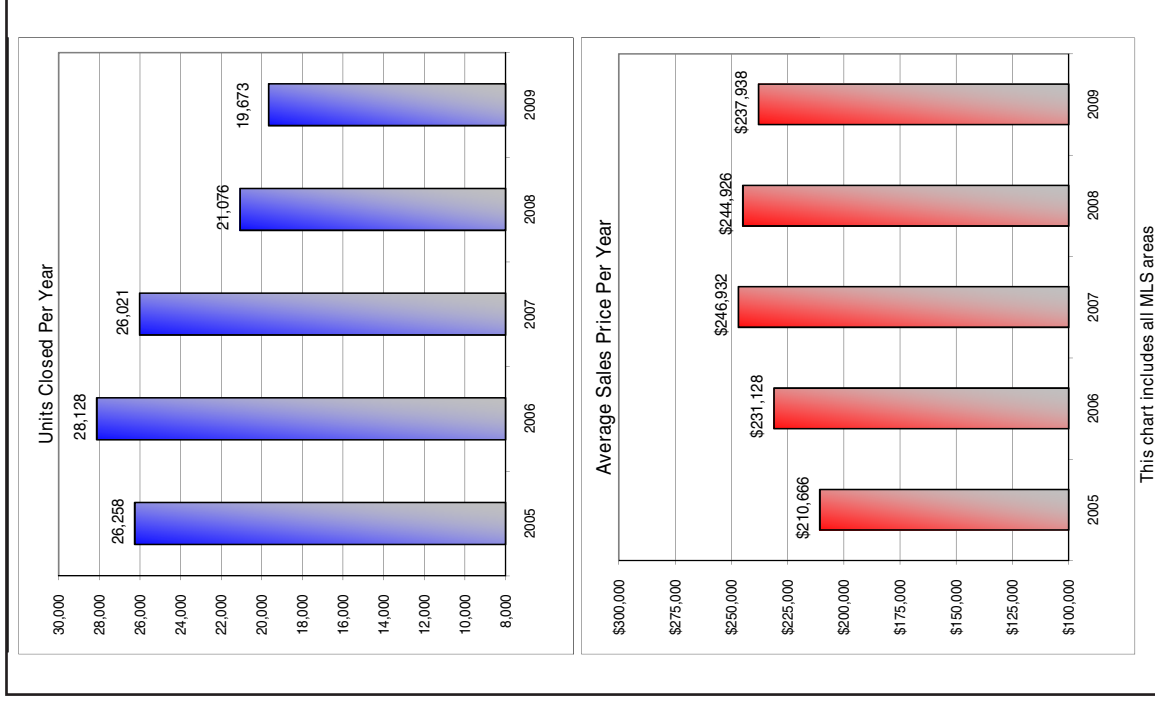
BASED ON INFORMATION FROM THE AUSTIN BOARD OF REALTORS® (ALTERNATIVELY, FROM ACTRIS) FOR THE PERIOD 1/1/2005 THROUGH 12/31/2009. NEITHER THE BOARD NOR ACTRIS GUARANTEES OR IS IN ANY WAY RESPONSIBLE FOR ITS ACCURACY. ALL DATA IS PROVIDED 'AS IS' AND WITH ALL FAULTS. DATA MAINTAINED BY THE BOARD OR ACTRIS MAY NOT REFLECT ALL REAL ESTATE ACTIVITY IN THE MARKET. COPYRIGHT 2010AUSTIN CENTRAL TEXAS REALTY INFORMATION SERVICES, INC.

UNITS CLOSED BY PRICE RANGE

WWW.ALAMOTITLE-AUSTIN.COM • 512.483.6710



UNITS CLOSED & AVERAGE SALES PRICE PER YEAR



Alamo Title

BASED ON INFORMATION FROM THE AUSTIN BOARD OF REALTORS® (ALTERNATIVELY, FROM ACTRIS) FOR THE PERIOD 1/1/2005 THROUGH 12/31/2009. NEITHER THE BOARD NOR ACTRIS GUARANTEES OR IS IN ANY WAY RESPONSIBLE FOR ITS ACCURACY. ALL DATA IS PROVIDED 'AS IS' AND WITH ALL FAULTS. DATA MAINTAINED BY THE BOARD OR ACTRIS MAY NOT REFLECT ALL REAL ESTATE ACTIVITY IN THE MARKET. COPYRIGHT 2010AUSTIN CENTRAL TEXAS REALTY INFORMATION SERVICES, INC.

ANNUAL SINGLE FAMILY RESIDENTIAL SALES 2009

WWW.ALAMOTITLE-AUSTIN.COM • 512.483.6710

MLS Area	Sales Volume	Units Closed	Average Sales Price	% of Total Units	% of Total Volume
10N	56,815,500	312	182,101	1.59%	1.21%
10S	106,136,471	596	178,081	3.03%	2.27%
11	22,119,347	205	107,899	1.04%	0.47%
1A	99,475,857	293	339,508	1.49%	2.13%
1B	178,418,846	307	581,169	1.56%	3.81%
1N	125,503,329	434	289,178	2.21%	2.68%
2	92,632,124	407	227,597	2.07%	1.98%
2N	45,728,818	358	127,734	1.82%	0.98%
3	75,035,017	342	219,401	1.74%	1.60%
3E	16,353,605	124	131,884	0.63%	0.35%
4	94,393,949	295	319,979	1.50%	2.02%
5	47,076,125	268	175,657	1.36%	1.01%
5E	10,798,951	101	106,920	0.51%	0.23%
6	80,666,813	275	293,334	1.40%	1.72%
7	43,659,978	117	373,162	0.59%	0.93%
8E	166,235,809	210	791,599	1.07%	3.55%
8W	138,625,293	224	618,863	1.14%	2.96%
9	16,158,969	151	107,013	0.77%	0.35%
BA	35,801,130	250	143,205	1.27%	0.76%
BL	7,323,082	32	228,846	0.16%	0.16%
BT	454,000	5	90,800	0.03%	0.01%
BU	25,721,730	139	185,048	0.71%	0.55%
BW	23,527,207	146	161,145	0.74%	0.50%
CC	17,034,082	165	103,237	0.84%	0.36%
CLN	154,927,286	863	179,522	4.39%	3.31%
CLS	222,948,292	966	230,795	4.91%	4.76%
CM	10,158,117	43	236,235	0.22%	0.22%
DT	43,698,343	118	370,325	0.60%	0.93%
EL	23,561,659	207	113,824	1.05%	0.50%
FC	2,067,400	16	129,213	0.08%	0.04%
GP	175,000	1	175,000	0.01%	0.00%
GTE	35,475,294	227	156,279	1.15%	0.76%
GTW	176,190,282	710	248,155	3.61%	3.76%
GZ	1,707,300	7	243,900	0.04%	0.04%
HD	110,429,462	340	324,793	1.73%	2.36%
HH	134,791,317	829	162,595	4.21%	2.88%
HS	18,149,765	115	157,824	0.58%	0.39%
HU	63,268,089	426	148,517	2.17%	1.35%
HW	43,282,945	191	226,612	0.97%	0.92%
JA	6,433,361	58	110,920	0.29%	0.14%
KL	657,500	8	82,188	0.04%	0.01%
LC	4,445,996	32	138,937	0.16%	0.09%
LH	27,038,924	119	227,218	0.60%	0.58%
LL	25,061,738	82	305,631	0.42%	0.54%
LN	53,745,242	231	232,663	1.17%	1.15%
LS	314,485,906	742	423,835	3.77%	6.72%
LW	16,969,925	46	368,911	0.23%	0.36%
MA	31,226,863	259	120,567	1.32%	0.67%
MC	3,628,160	36	100,782	0.18%	0.08%
N	64,863,897	351	184,797	1.78%	1.39%
NE	44,399,470	305	145,572	1.55%	0.95%
NW	156,278,084	684	228,477	3.48%	3.34%
OT	12,015,290	69	174,135	0.35%	0.26%
PF	174,320,331	1,076	162,008	5.47%	3.72%
RN	193,053,960	423	456,392	2.15%	4.12%
RRE	199,704,286	1,068	186,989	5.43%	4.27%
RRW	234,606,156	1,030	227,773	5.24%	5.01%
SC	29,630,781	171	173,279	0.87%	0.63%
SE	14,535,563	133	109,290	0.68%	0.31%
SV	9,733,422	85	114,511	0.43%	0.21%
SWE	134,851,767	594	227,023	3.02%	2.88%
SWW	169,820,128	593	286,375	3.01%	3.63%
TC	15,224,894	151	100,827	0.77%	0.33%
UT	37,591,591	166	226,455	0.84%	0.80%
W	131,211,123	292	449,353	1.48%	2.80%
WE	5,177,228	32	161,788	0.16%	0.11%
WW	3,716,237	22	168,920	0.11%	0.08%
All Areas	\$ 4,680,954,406	19,673	\$ 237,938		



Alamo Title